

Printing at NYHS on Windows Vista or Windows 7

This guide will help you get your laptop printing at NYHS

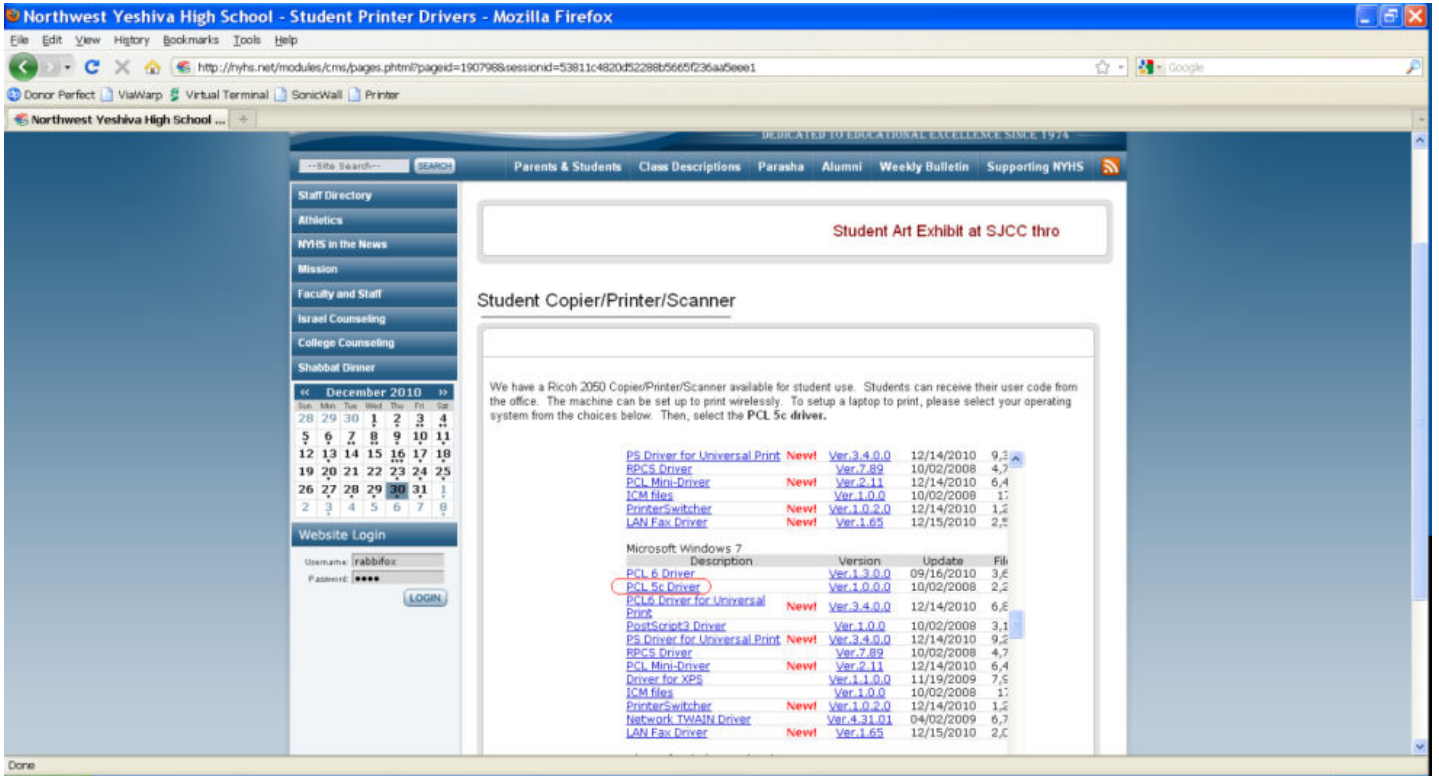
Step 1: If you DO NOT have a User Name for getting on the internet or you DO NOT have a User Code for printing, please see Spencer Oswald in the Administrative Office for assistance.

Step 2: If you have a User name and User Code, Sign into the internet

Step 3: go to NYHS.net, click on the Parents & Students tab, and click on Student Printer Drivers

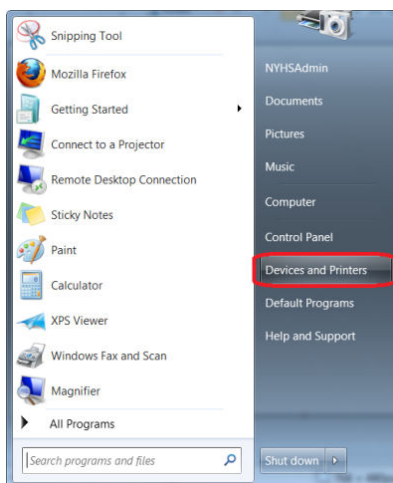
The screenshot shows the Northwest Yeshiva High School website in a Mozilla Firefox browser window. The browser title is "Northwest Yeshiva High School - Start Page - Mozilla Firefox" and the address bar shows "http://www.nyhs.net/". The website header includes the school name "NORTHWEST YESHIVA HIGH SCHOOL" and the tagline "DEDICATED TO EDUCATIONAL EXCELLENCE SINCE 1974". A navigation menu is visible with items: "Parents & Students", "Class Descriptions", "Parasha", "Alumni", "Weekly Bulletin", and "Supporting NYHS". The "Parents & Students" menu is expanded, showing options: "Student Activities", "Parent/Student Resources", "Student and Parent Handbook", "Volunteer Hours", "Attendance", "Student Printer Drivers", "Curriculum Updates Q1", and "Yearbook Ads". A red arrow points to the "Student Printer Drivers" option. Other website elements include a search bar, a calendar for December 2010, a "Join Our Mailing List" form, a "Donate" button, and a "FAST" logo.

Step 4: Look for your operating system (Windows 7, Vista) and type (32-bit or 64-bit). Then click on link PCL 5c Driver to download file



Step 5: Install PCL 5c Driver

Step 6: Go to start, then go to devices and printers.



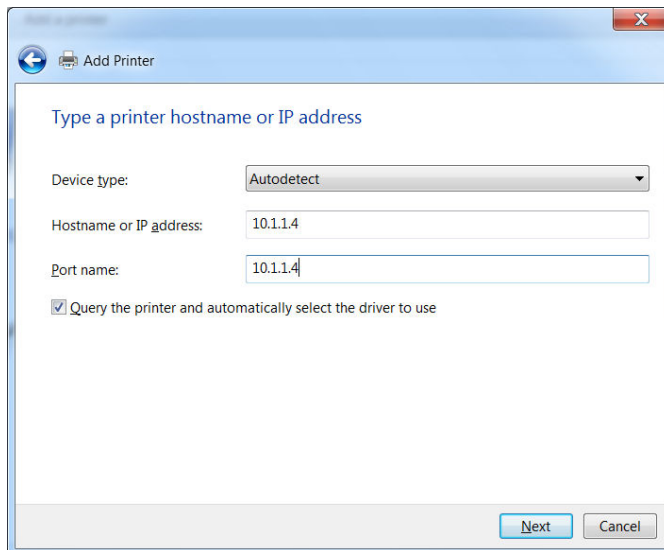
Step 7: Click on the link Add Printer (the link is at the top of the screen.)

Step 8: Choose Add a Network Printer Printer

Step 9: It will try to search for printer, choose The printer I want isn't listed.

Step 10: Choose Add a printer using a TCP/IP address or host name

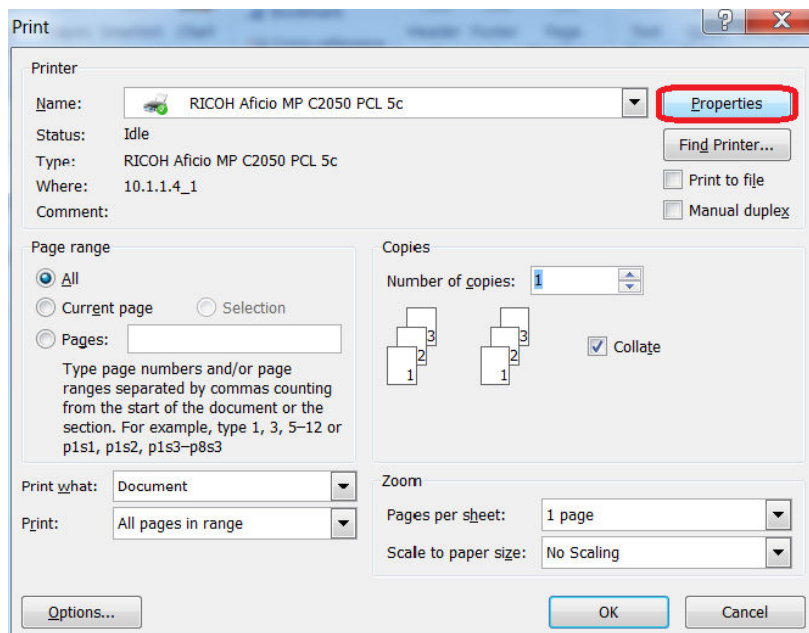
Step 11: For hostname or IP Address and also for port name put 10.1.1.4.



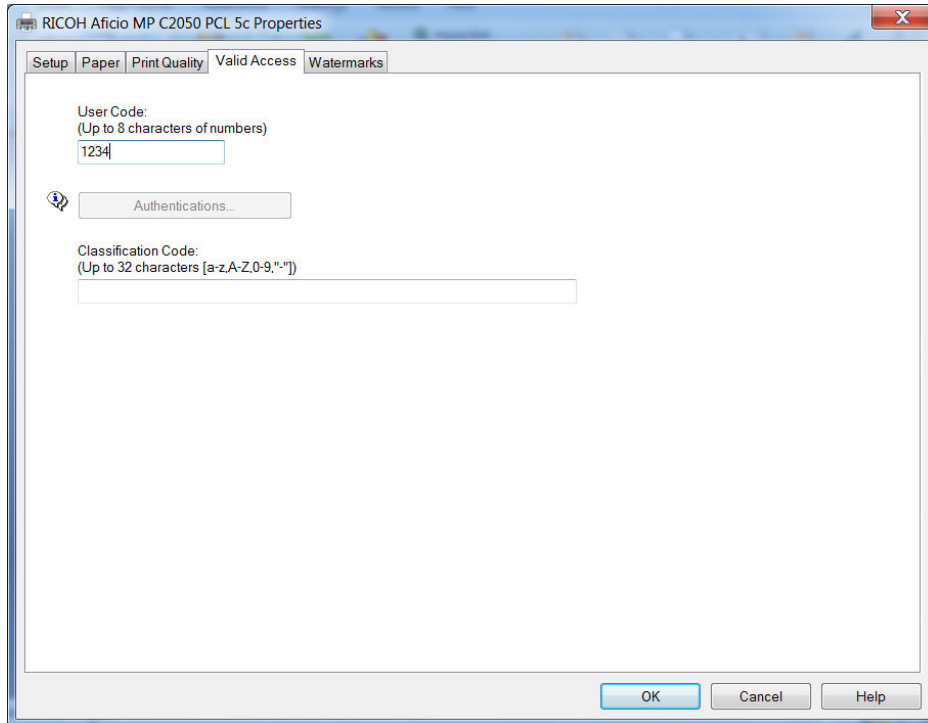
Step 12: This should now recognize the printer and allow it to install the driver.

Step 13: Once installed, to print make sure you are online

Step 14: When ready to print go to print. Then click on properties.



Step 15: Click on tab Valid Access and enter your 4-digit User Code.



Step 16: Go ahead and print.